

Inversions for structure of AR11092 & AR11093

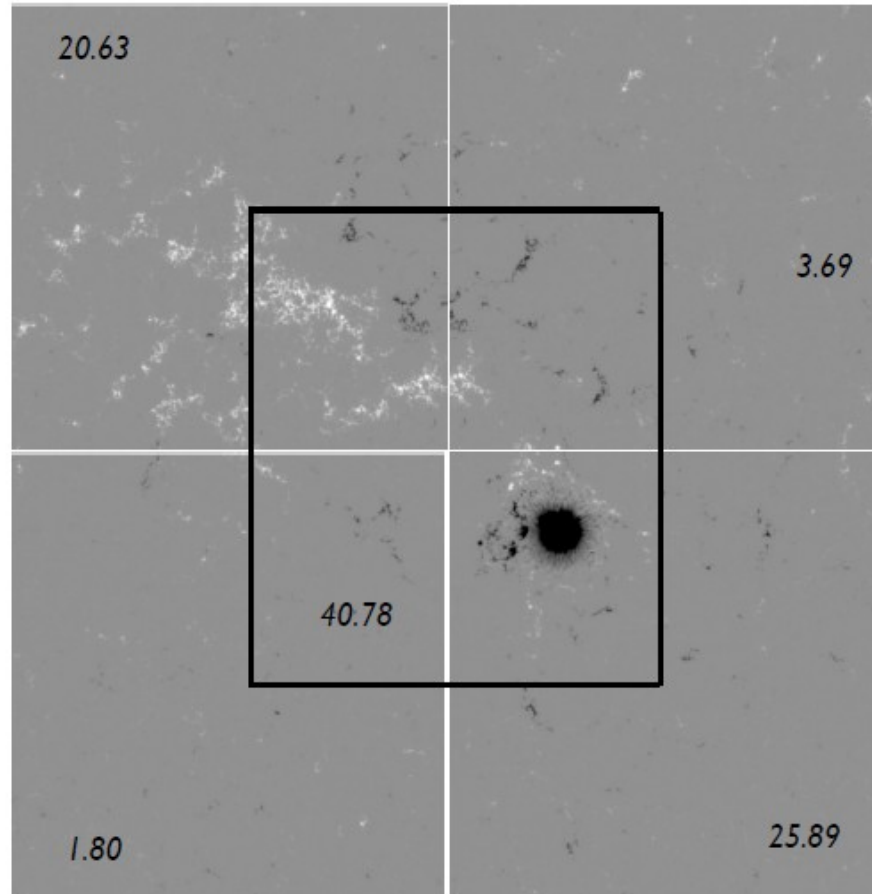
Charles Baldner
LoHCo, Feb 2011

photo by J. Schou

Structure inversions

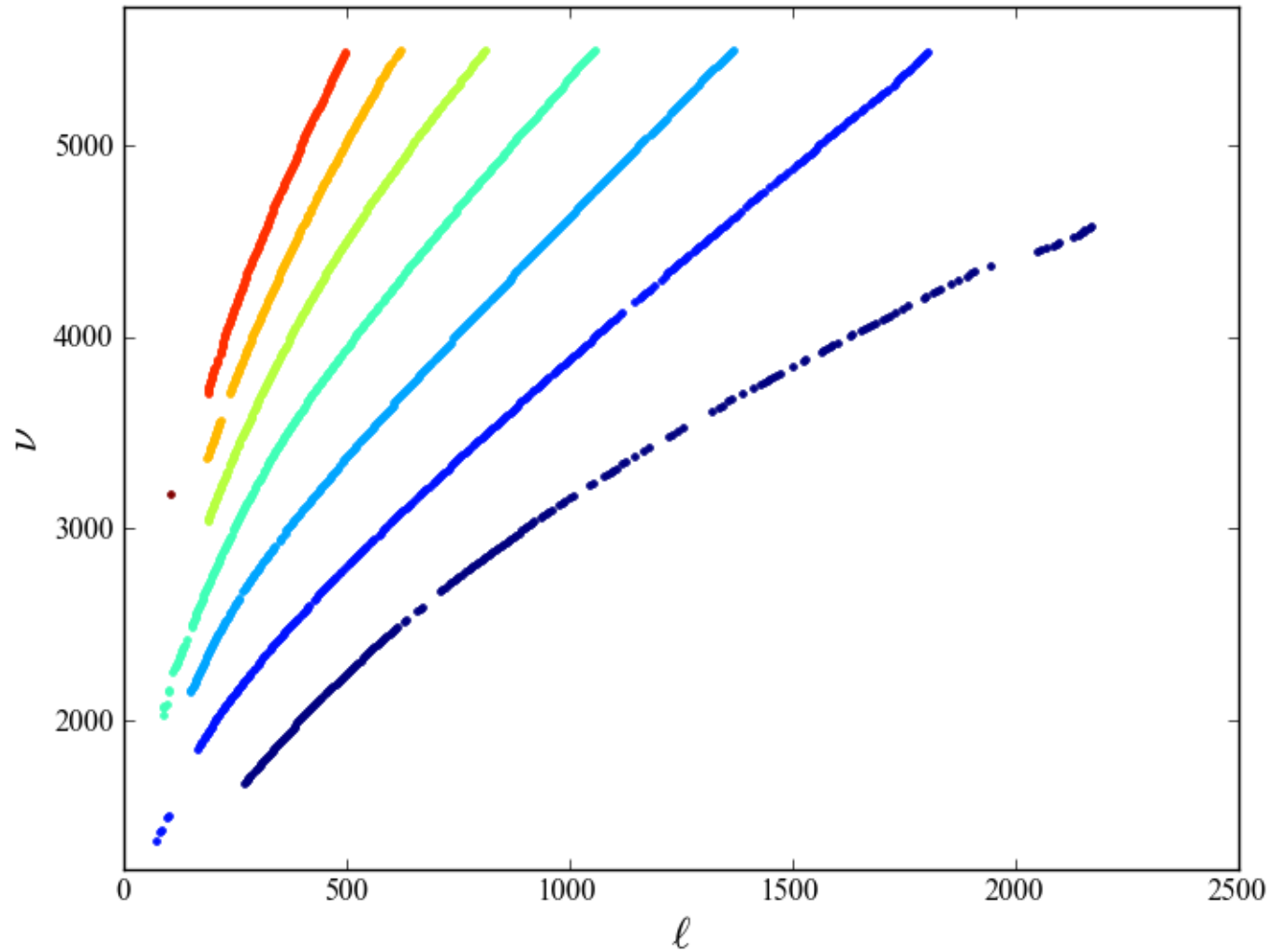
- SOLA inversion for δc^2
- 'c' fits (includes asymmetry)

AR 11092

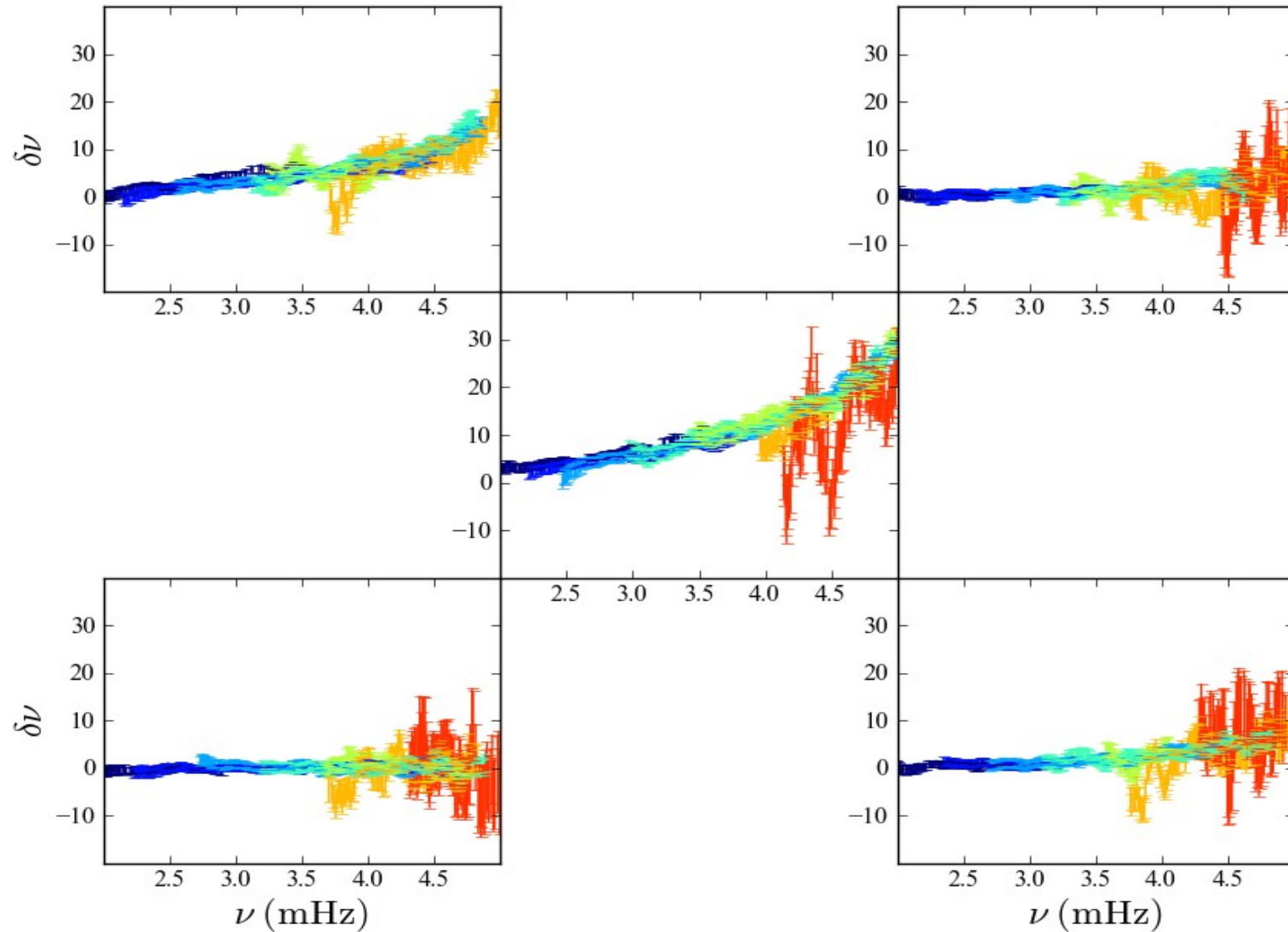


~~courtesy of~~ stolen from R. Bogart

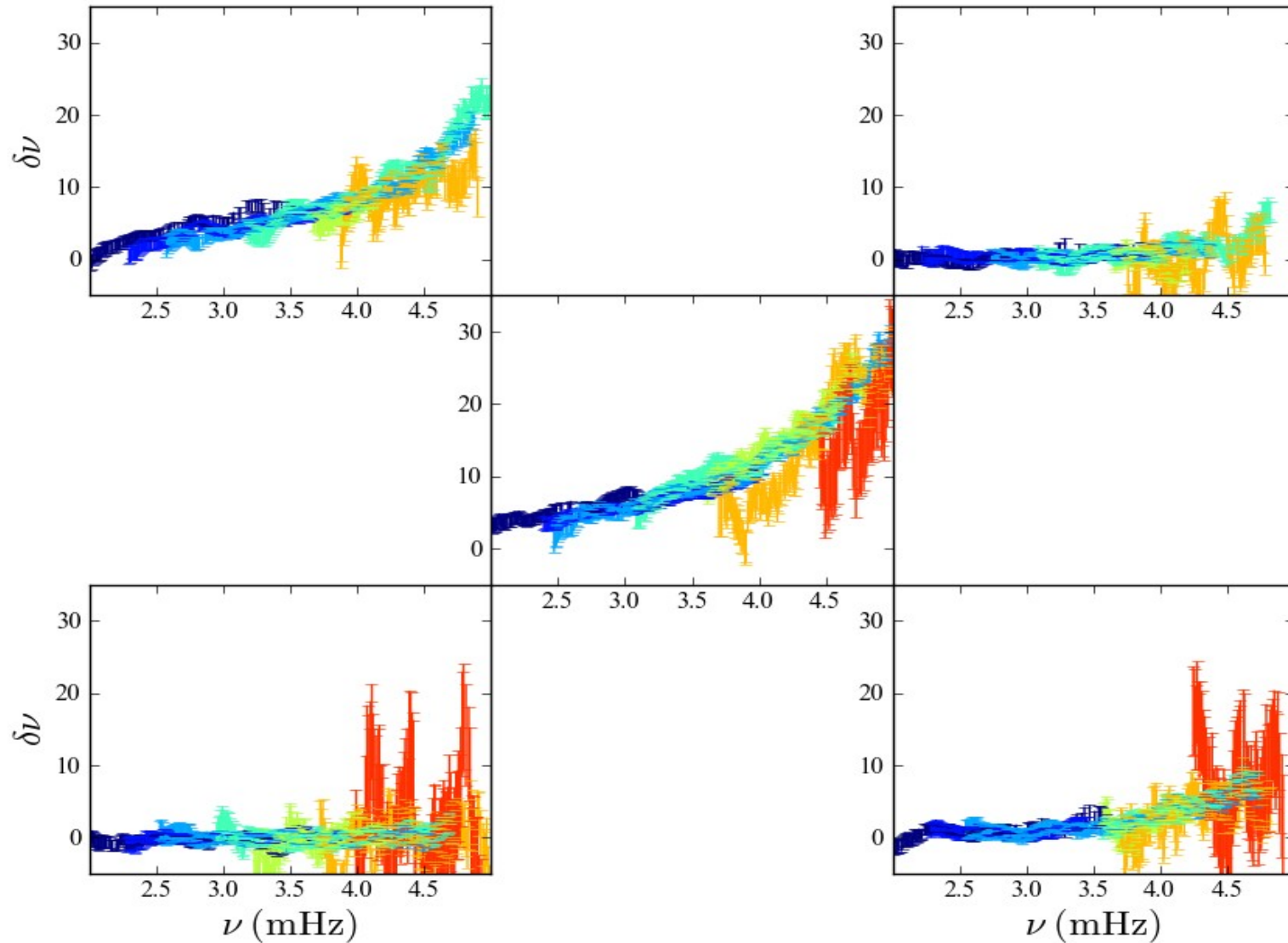
Frequency fits



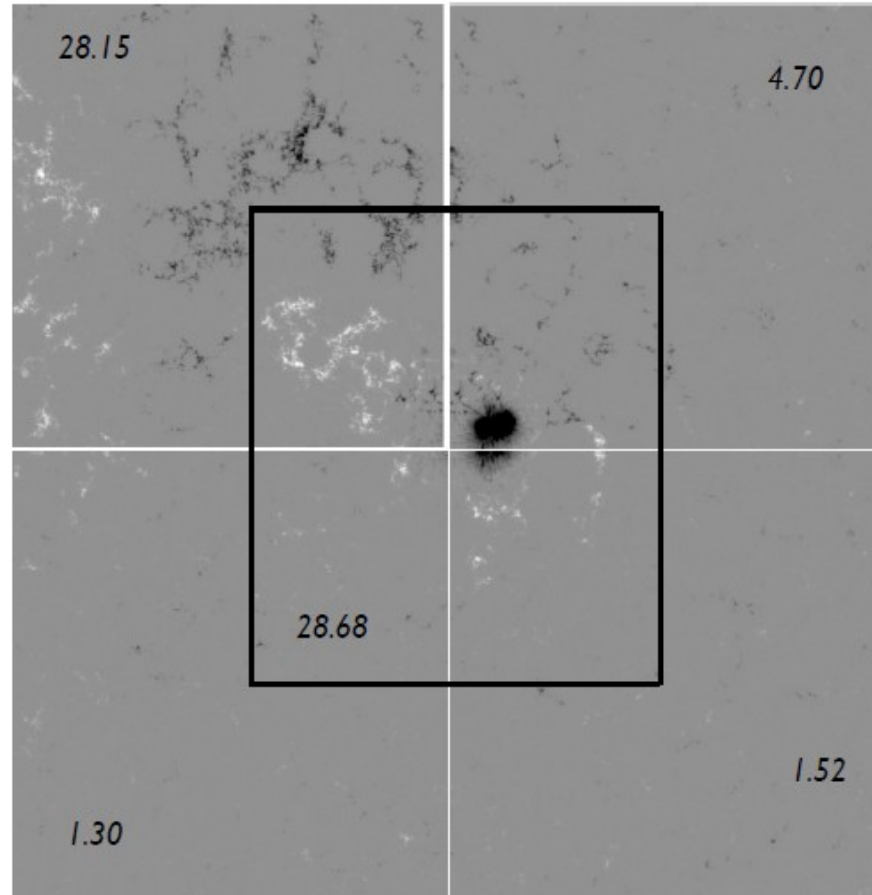
Frequencies (comp. regions 1)



Frequencies (comp. regions 2)

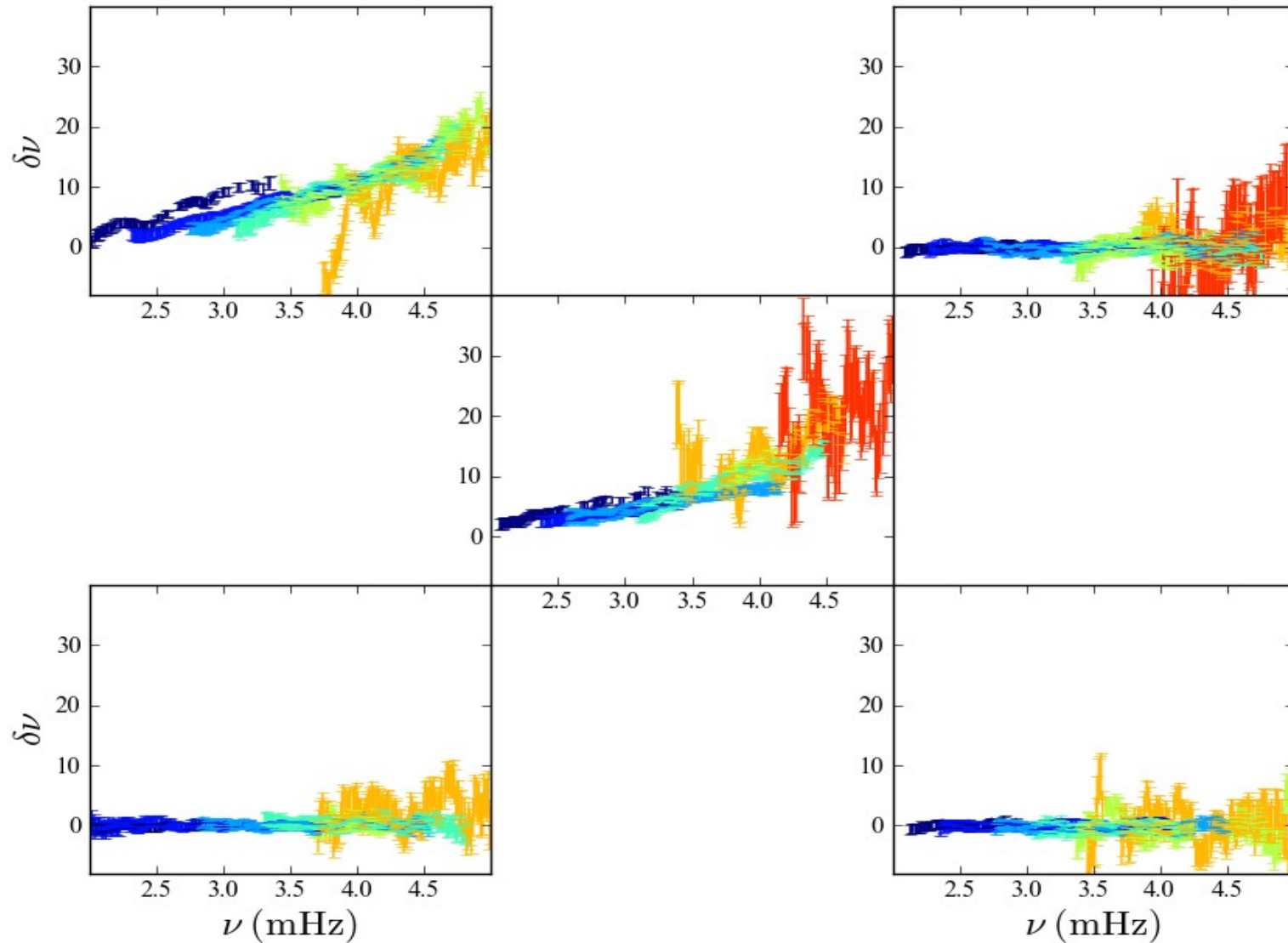


AR 11093

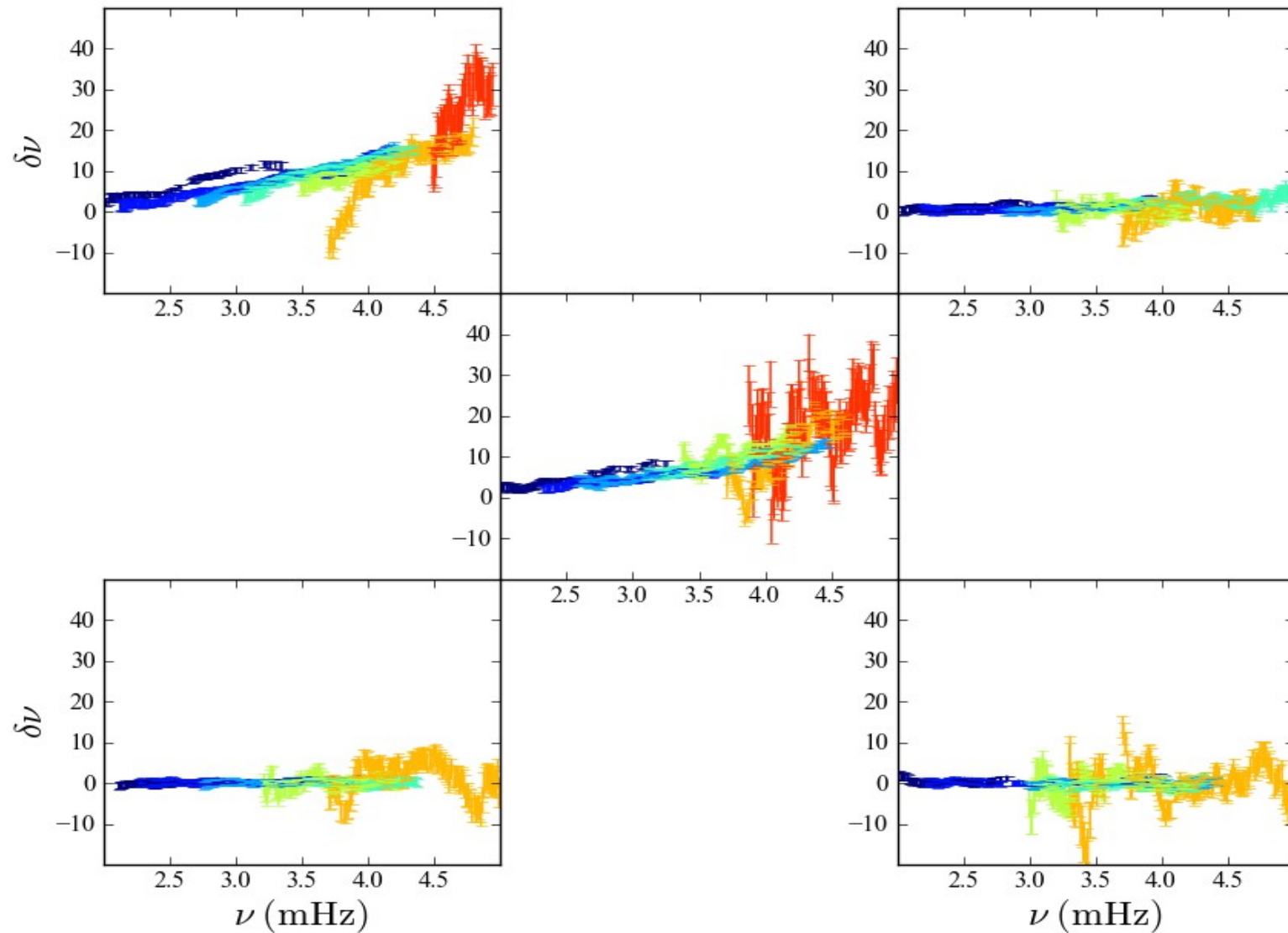


~~courtesy of~~ stolen from R. Bogart

Frequencies (comp. regions 1)

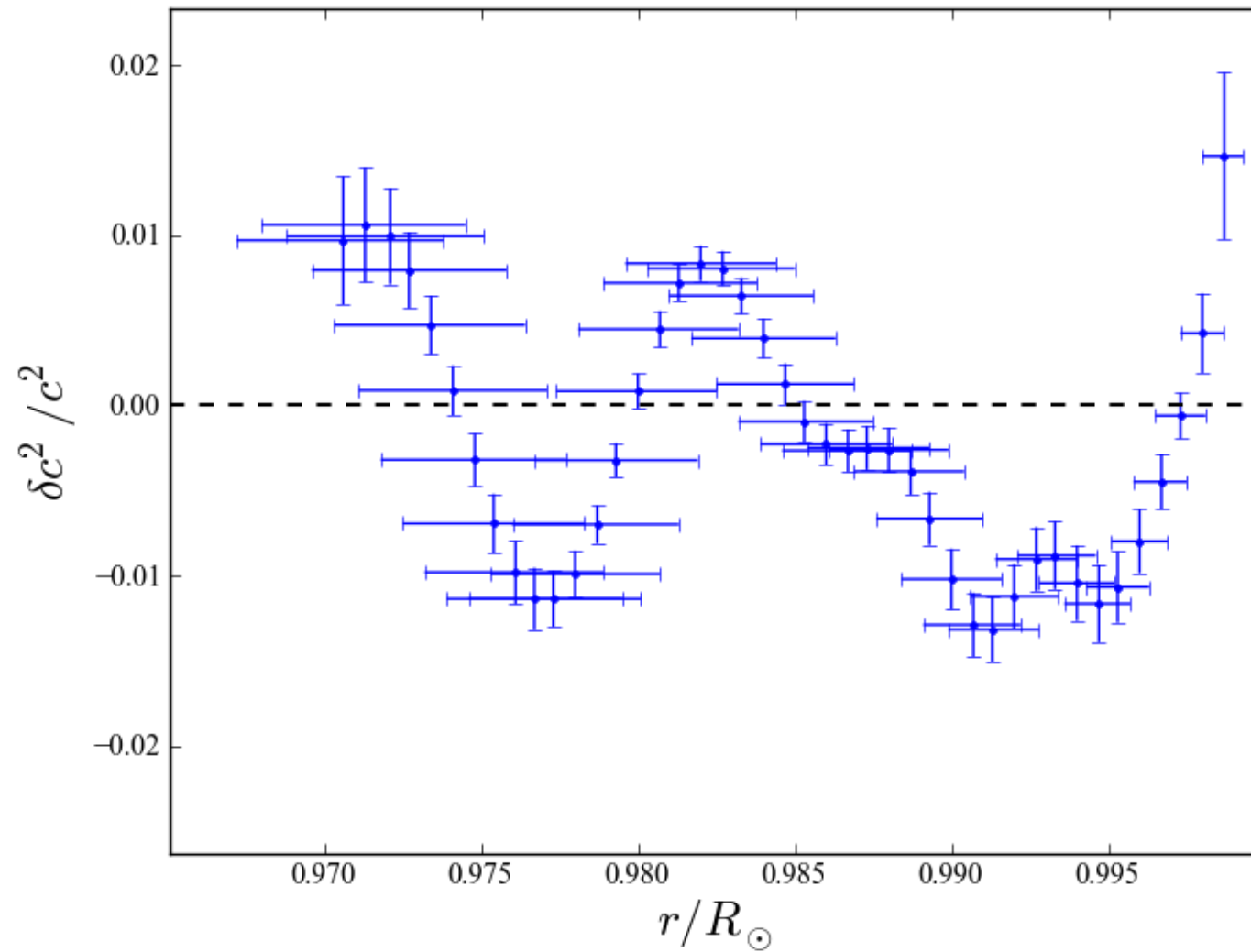


Frequencies (comp. regions 2)

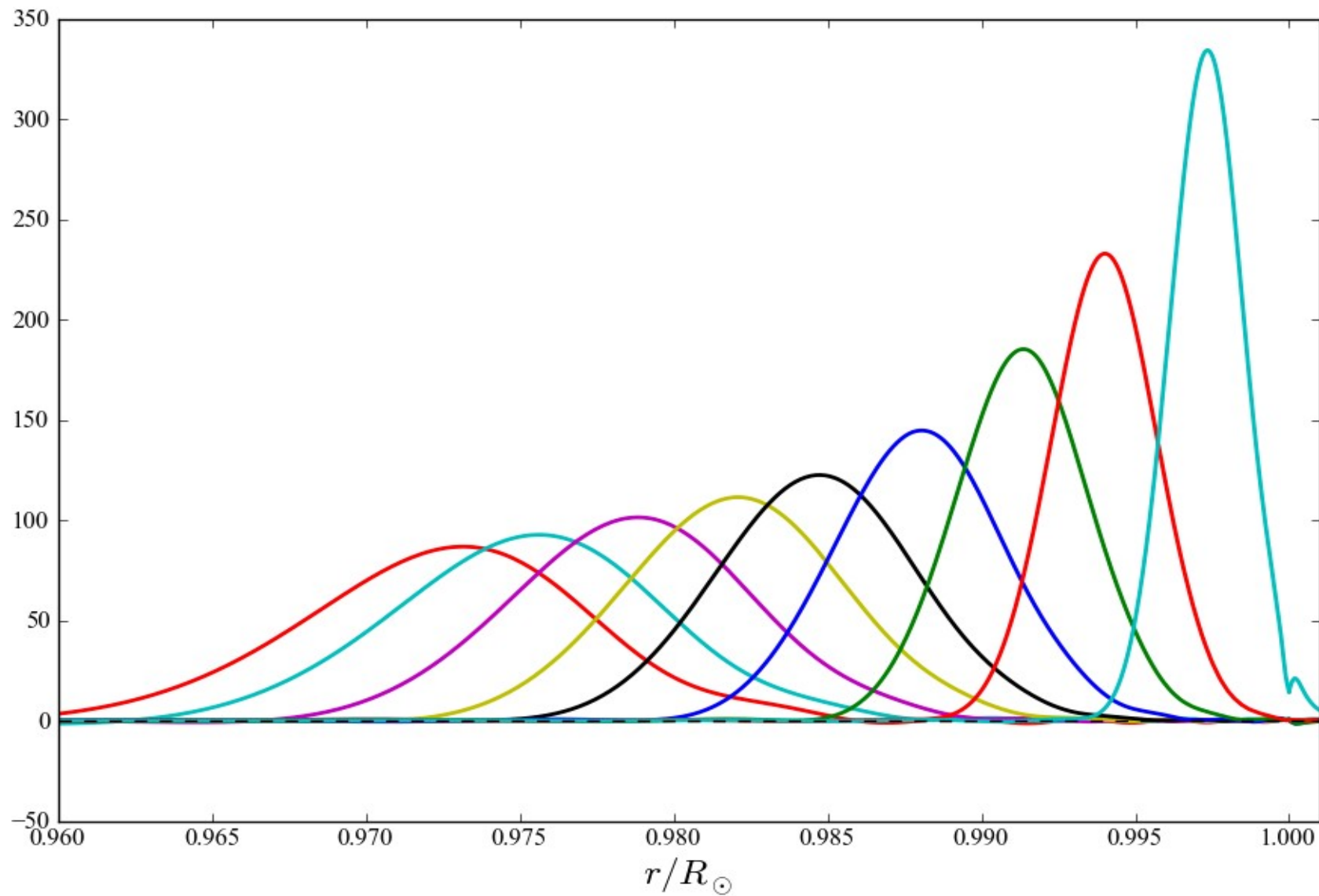


Inversions

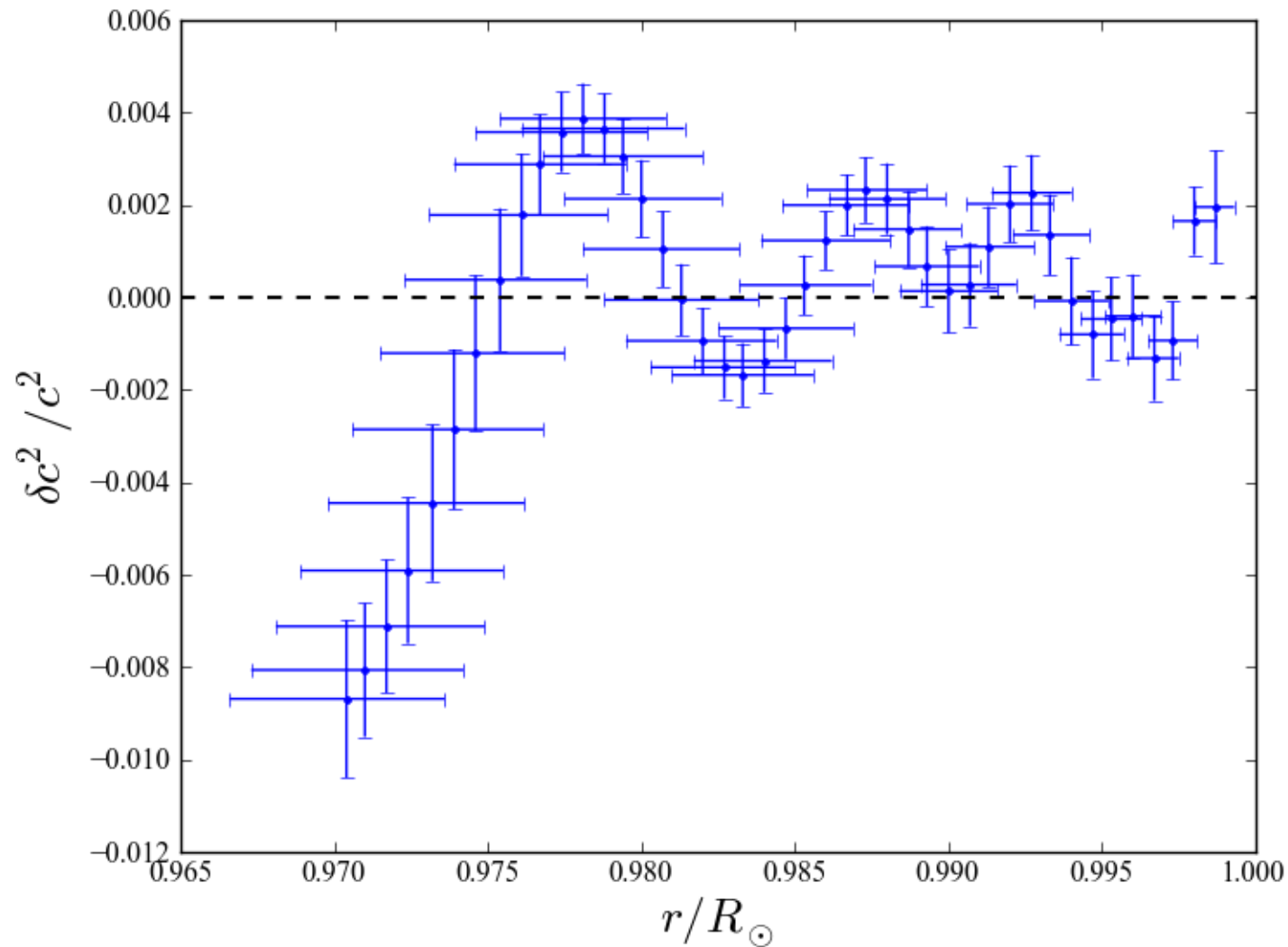
AR11092



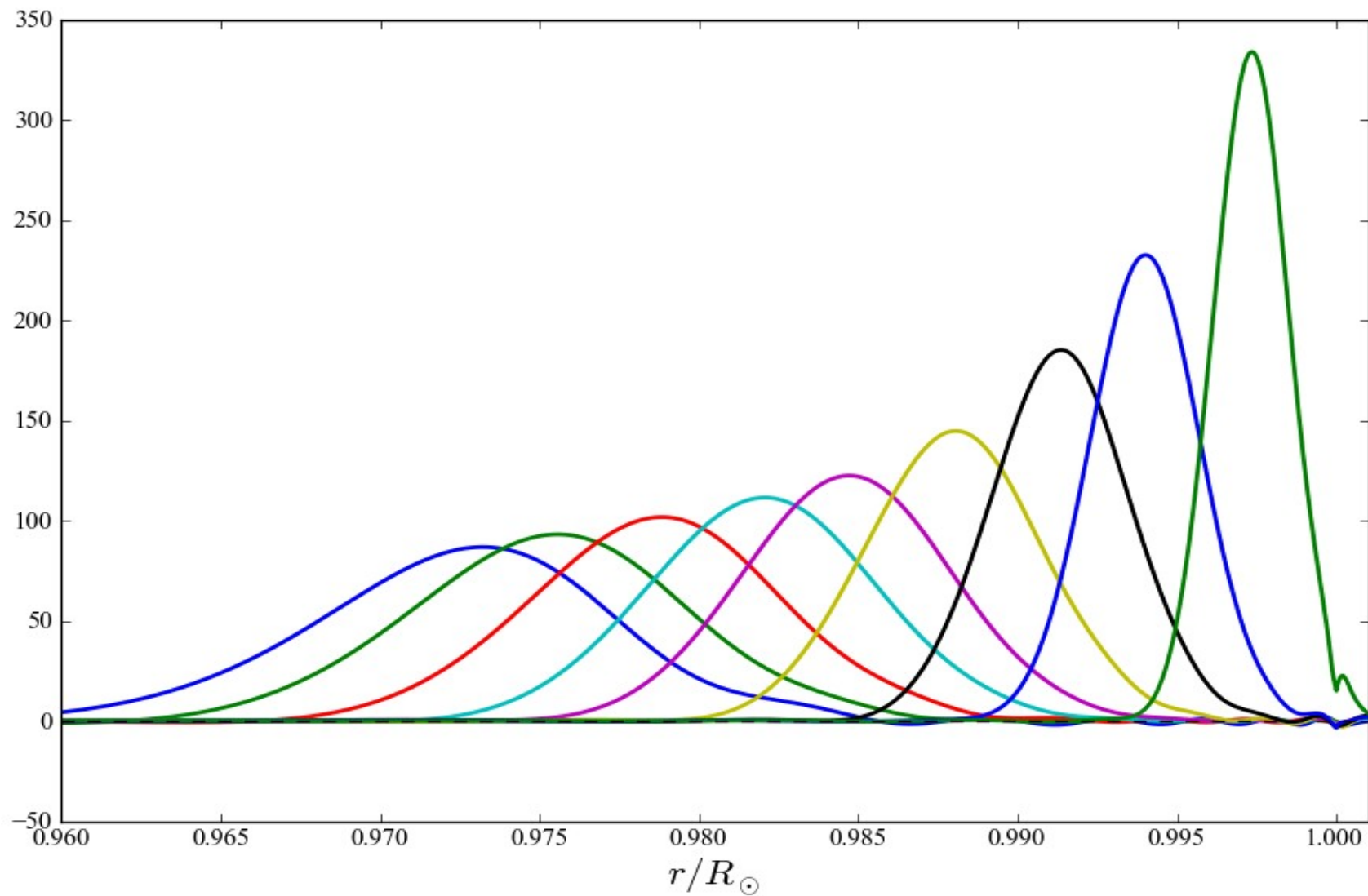
Averaging kernels



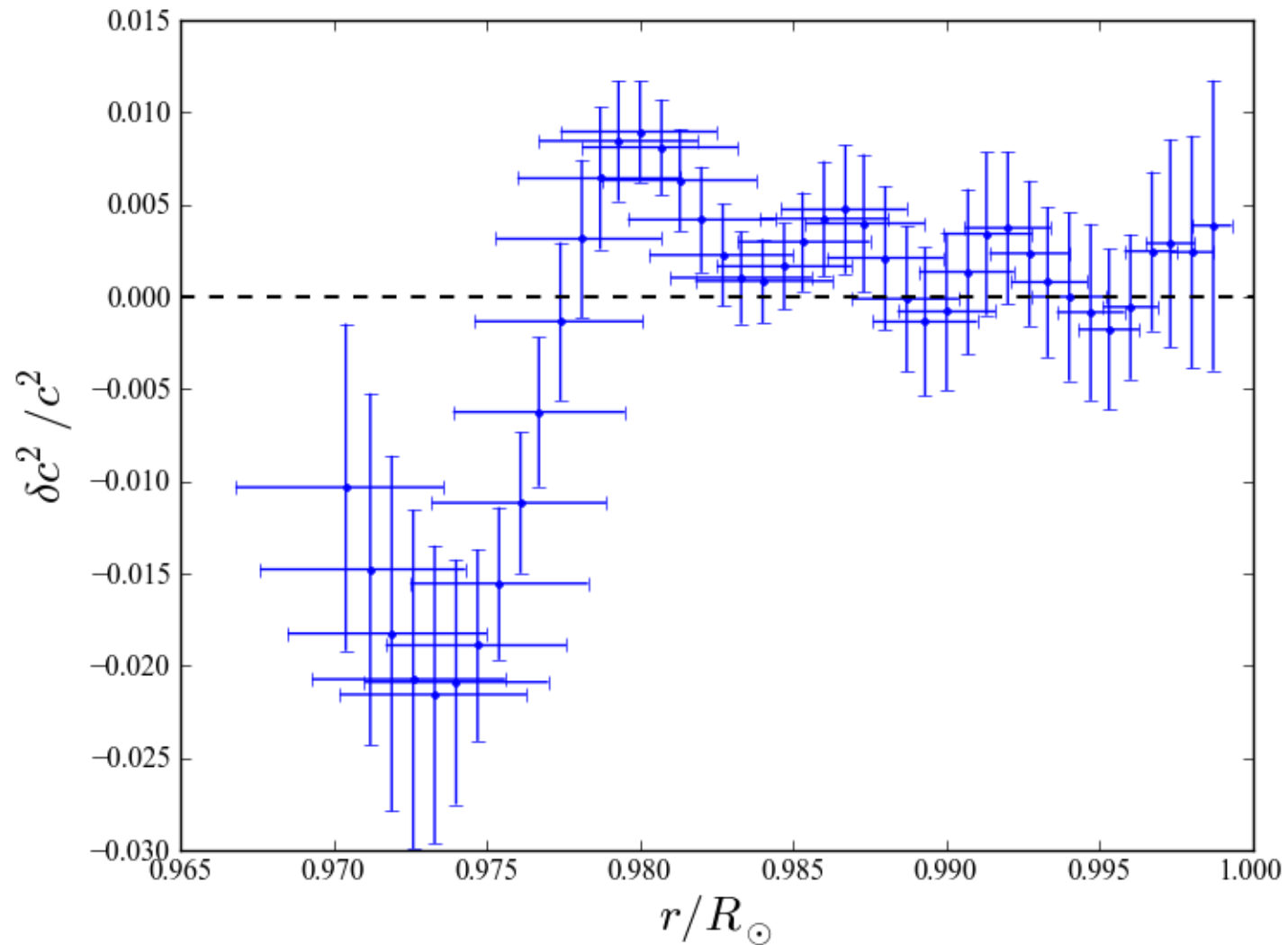
AR11092 – upper right



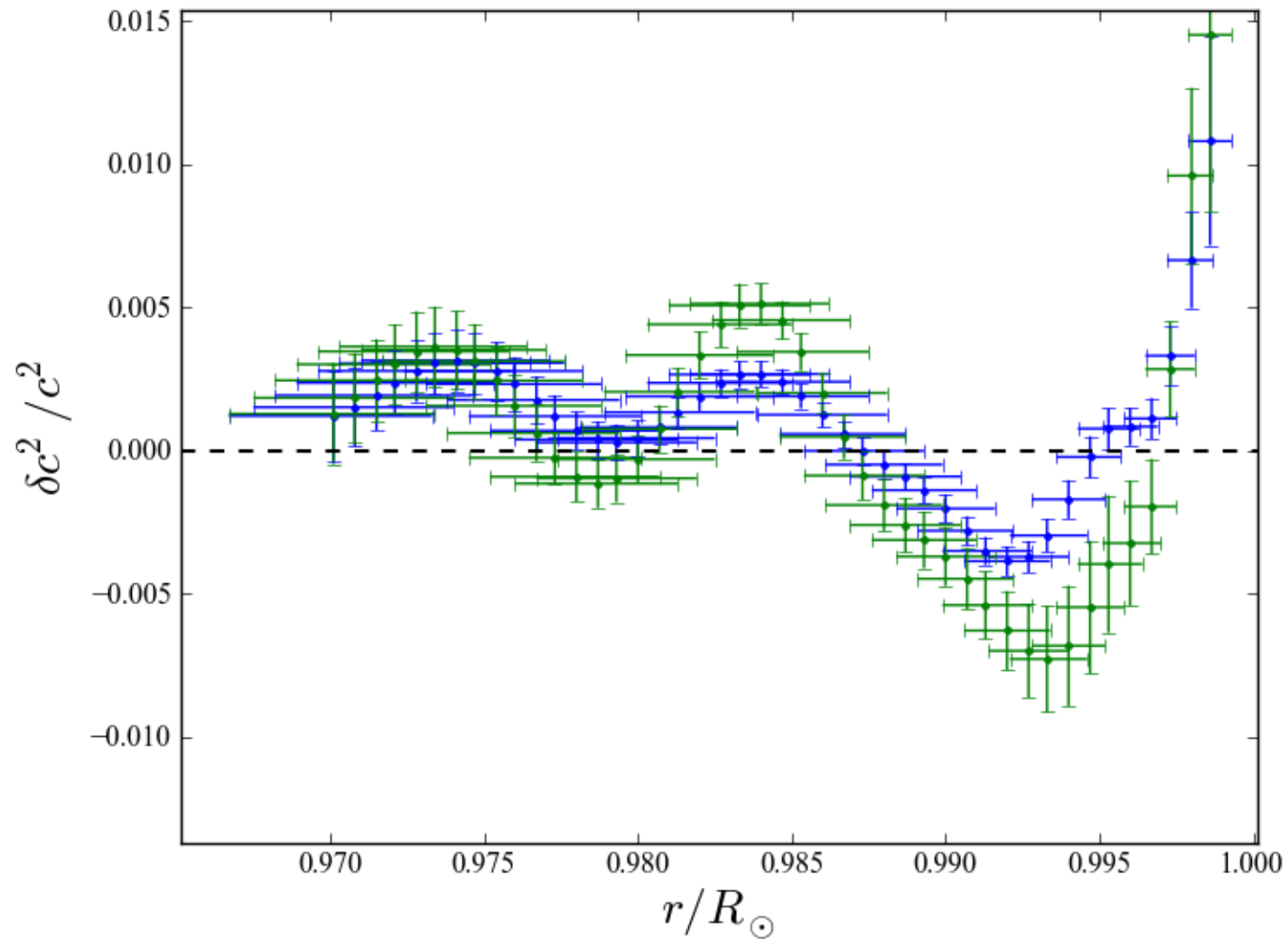
Averaging kernels



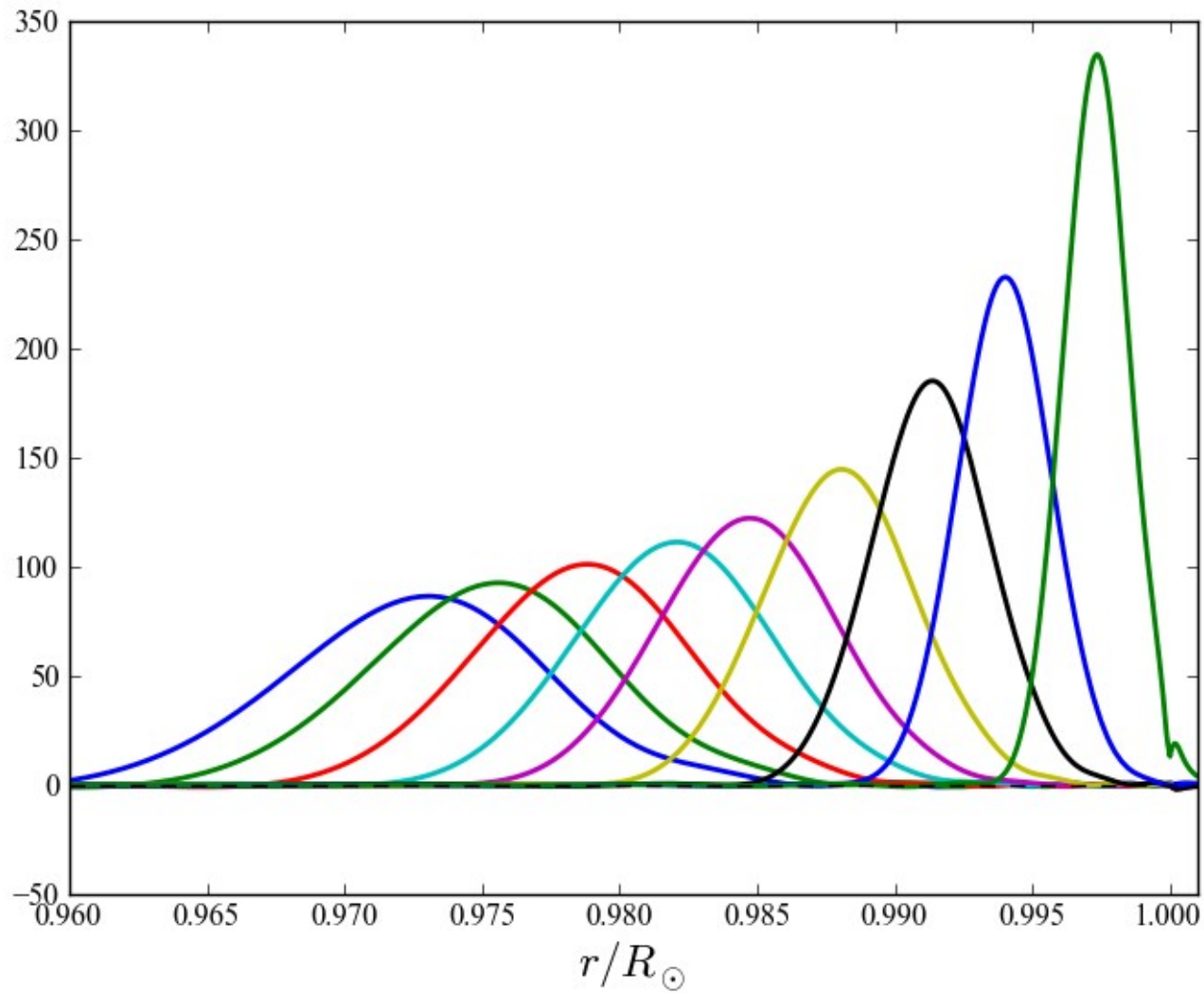
AR11092 – upper left (plage)



AR11093



Kernels (1)



Kernels (2)

